



LIVING SPACE

CATALOGUE

CATALOGO DEGLI SPAZI ABITATIVI
CATÁLOGO DE ESPACIOS HABITABLES
كتالوج مساحات المعيشة

Welcome,

Universal Kitchens & Wardrobes specializes in kitchen and wardrobe design and installation in the UAE. We collaborate with UK Factory, where our products are manufactured to the highest international standards.

Our focus is on delivering exceptional and functional designs for kitchens and wardrobes that meet the unique needs of each client. Our products feature high-quality materials and innovative designs, with meticulous attention to detail to ensure both high functionality and superior aesthetics.

UK - Universal Kitchen & Wardrobes brings a blend of contemporary design, precision engineering, and premium quality to your kitchen. Assembling from Jordan, using European potential top-tier world-class materials, products are meticulously crafted using the finest materials and cutting-edge technology, ensuring both durability and aesthetic appeal. It is the perfect solution for your unique spaces, where quality meets craftsmanship.

Additionally, our professional installation team across the UAE ensures a seamless and exceptional installation experience, executing designs with precision and care to guarantee complete customer satisfaction.



INDEX

MODERN

PAGE 6

CLASSIC

PAGE 34

CONTEMPORARY & AVANT-GARDE

PAGE 48

CLOSETS

PAGE 71

WOOD SAMPLES

PAGE 95

ENHANCEMENTS

PAGE 115

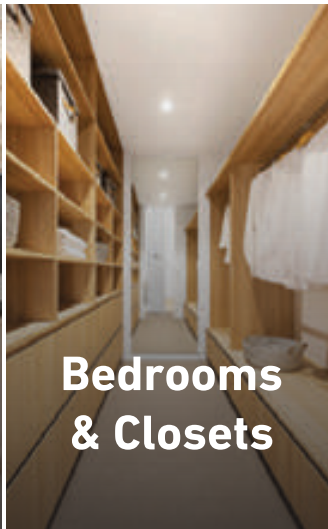
ACCESSORIES / HANDLES
FITTINGS / LIGHTING

INDEX

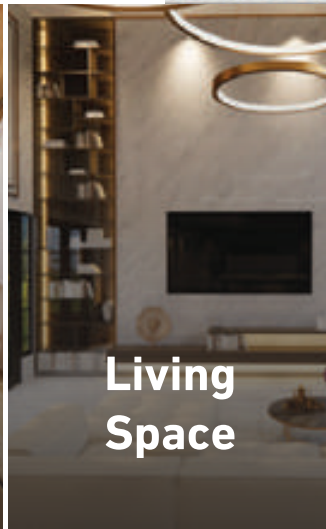
PERFECT SOLUTIONS FOR YOUR UNIQUE SPACES



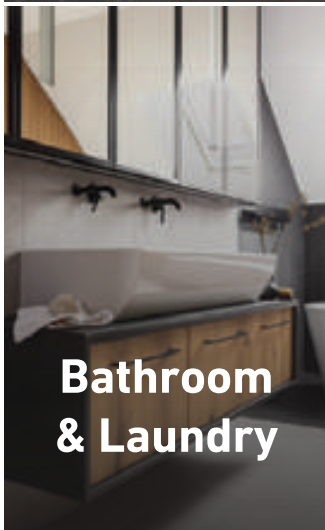
Kitchens



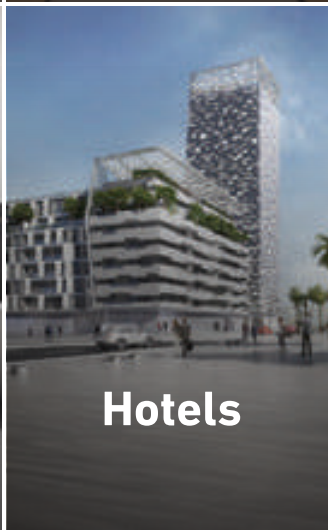
**Bedrooms
& Closets**



**Living
Space**



**Bathroom
& Laundry**



Hotels



**Business
& Clinics**





WE PROVIDE

a comprehensive furniture design & installation service for your perfect space.

Universal Kitchens & Wardrobes provides highly customized products designed and built to meet the needs of the individual customer and can be created in any array of textures, colors and materials. The broadness of choices is phenomenal.

Furnishing the spaces in your home, office or project with Universal follow a seamless set of steps. At Universal Kitchens, we understand how to cater to a diverse variety of clients' visions and implement their conceptualizations to reality!



Welcome to our kitchens catalog, where timeless design meets modern functionality. Each kitchen is thoughtfully crafted to enhance both style and practicality, featuring high-quality materials and innovative solutions that elevate your space. From classic elegance to contemporary charm, our collection offers a wide range of designs to suit every taste and need, ensuring your kitchen is not only beautiful but also a perfect fit for your lifestyle. Explore our selection and find the ideal kitchen that brings your vision to life.







MODERN

The Modern Kitchen and Interior Design Theme

is defined by sleek lines, minimalist aesthetics, and a seamless blend of functionality and style. Characterized by high-quality materials, smart storage solutions, and integrated technology, modern spaces prioritize efficiency without compromising elegance. This design philosophy has evolved from traditional craftsmanship, where kitchens were once separate, utilitarian spaces, to today's open-concept layouts that serve as the heart of the home. Color plays a vital role in modern kitchen design with neutral tones like white, gray, and beige creating a timeless appeal while bold accents such as navy, black or deep green add depth and character. Matte and glossy finishes further enhance the look reflecting personal style and ambiance.

MDF (Medium-Density Fiberboard) has become a popular choice in modern kitchens due to its versatility, durability, and smooth surface which allows for flawless paint application and sleek finishes. It provides a cost-effective yet high-quality alternative to solid wood, making it ideal for cabinetry, countertops, and decorative elements. With its ability to be customized in various textures and colors, MDF contributes to the refined, contemporary aesthetic that defines modern interior design.

UK is more than just a manufacturer—it is a design house dedicated to crafting exceptional kitchen and interior solutions. With a deep commitment to innovation, quality, and aesthetics, we blend modern trends with timeless craftsmanship to create spaces that are both functional and visually stunning. Our expertise in materials, color selection, and customized designs allows us to transform interiors into refined, contemporary environments tailored to individual preferences. Whether through sleek cabinetry, elegant finishes, or high-quality MDF applications, UK ensures that every detail reflects excellence and sophistication.



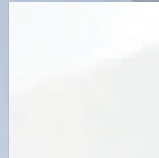




The countertop design features a sleek, modern surface adorned with an array of fresh, vibrant ingredients blending functional beauty with culinary artistry.



The modern white kitchen boasts minimalist cabinetry, a pristine countertop, and state-of-the-art appliances, creating a clean and sophisticated space perfect for both cooking and entertaining.

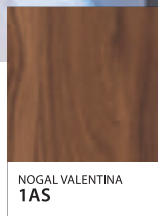
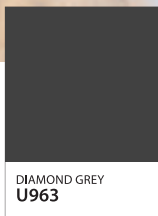


WHITE GLOSSY
TZ801



CHROMIX SILVER
F638





The open shelf design incorporates box-type sectioning, offering a streamlined yet functional way to store and display kitchen essentials. A sleek glass cabinet, dedicated to wine and fancy glasses, adds an elegant touch while showcasing the collection in a refined, illuminated display.



The grey quartz countertop in the open living space creates a striking focal point seamlessly blending with the surrounding kitchen and offering both durability and style. Above, an island hood complements the design while a mix of high and low chairs around the island invites versatile seating for dining, socializing or casual gatherings.



PEWTER HALIFAX OAK
H3176



STONE GREY
U727

In this catalog, we've thoughtfully integrated food into the design of our kitchens to create a comprehensive vibe that enhances the ultimate home experience.

Our aim is to go beyond functionality, making sure that every aspect of life is celebrated within the space. By seamlessly blending style, utility, and aesthetic appeal, we've crafted kitchens that are not only places to prepare meals but are integral to the overall ambiance of the home, where the joy of food and life meet.

The kitchen is the heart of every home, where culinary creations come to life and where social interactions flourish. It's not just a space for cooking; it's a central gathering point, bringing people together for conversations, laughter, and memories. In this design, the kitchen becomes the focal area of the home, where guests naturally gather, making it the perfect place for connection and shared moments. It's a space that fosters relationships, making it ideal for both intimate family dinners and larger social gatherings.

Our approach to kitchen design is driven by elegance and thoughtfulness, crafting spaces that are both visually stunning and deeply functional. We've paid special attention to every detail, ensuring that the design not only meets the practical needs of our clients but also elevates the entire atmosphere of the home. Through careful consideration of layout, materials, and finishes, we've created kitchens that are highly desired by our clients, offering them a place to experience the true joy of cooking and connecting with loved ones.





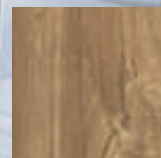
Epicurean Art

When designing kitchens, we prioritize creating efficient spaces that accommodate all the essential items from pots and pans to serving platters and cutlery. The goal is to ensure that everything has its proper place allowing for an organized and practical layout that supports both functionality and ease of use. Our approach is centered on maximizing storage while maintaining a clean, streamlined design, so that each item is within reach yet tucked away in a way that enhances the overall flow of the kitchen.

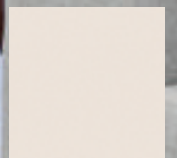
The images you see are actual products we've produced and they reflect the careful thought and meticulous attention we dedicate to every design. Each kitchen is the result of a concentrated effort to balance aesthetics with practicality ensuring that every element is thoughtfully placed to create a space that works for its user. From storage solutions to the placement of each feature, every detail is intentional, contributing to a harmonious and well-organized environment that meets our clients' needs and exceeds their expectations.







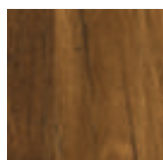
BROWN KANSAS OAK
H1113



BISCUIT
36W



The kitchen also features a fully integrated dishwasher, seamlessly blending into the cabinetry for a sleek, modern look while maintaining the natural wooden aesthetic. The flap open shelves provide a stylish and convenient storage solution for glasses, offering easy access while maintaining a clean and organized appearance.



DARK HUNTON OAK
H2033



MATT BLACK
231



The kitchen exudes a warm, inviting atmosphere with its rich wooden accents, creating a natural and rustic charm. Its expansive layout offers plenty of room to move and work, making it the perfect space for both culinary creativity and family gatherings.



GREY NEBRASKA OAK
H3332

Gastronomic Vision

The exceptional adaptability of our island makes it a standout feature in public spaces where efficiency is key. Its design, characterized by carefully chosen aesthetics and materials, transforms the feel of a home-like setting into a sleek, modern concept. Inspired by a contemporary and welcoming restaurant in the heart of a European city, this innovation serves as a foundation for premium catering solutions. Every stage—cooking, preparation, and serving—takes place in full view, allowing customers to first engage with the experience visually before enjoying the flavors at the table.





Global Flavors, Elegant Spaces: A Kitchen Design for Every Meal

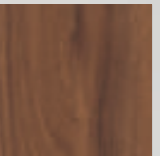


This kitchen setup brings a vibrant energy to the space, with peppers and a bowl of noodles topped with fiery hot seeds laying beautifully on the table, symbolizing the bold flavors of international cuisine. The array of colors and textures from the peppers, alongside the noodles, create a dynamic and inviting atmosphere that sparks the imagination. It's the perfect representation of a catering experience where food is not only about taste but also about the sensory experience setting the stage for a memorable dining experience.

The interior design of this kitchen elevates the theme with sleek countertops and thoughtfully placed elements that complement the rich ingredients and create an immersive space. The modern yet warm design invites guests to connect over food celebrating global flavors and the joy of shared meals. From the strategic placement of utensils to the open space for preparation, this kitchen embodies a design that encourages creativity and togetherness making it a truly exceptional environment for crafting and enjoying an international culinary experience.



The flap door design offers exceptional convenience, providing easy access even at high heights while maintaining a sleek, space-saving aesthetic.



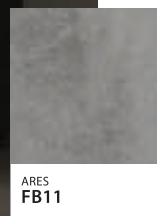
NOGAL VALENTINA
1A5





The Art of Open-Concept Living

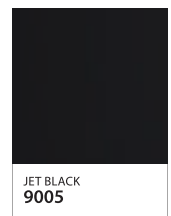
This kitchen features a sophisticated blend of grey and greenish tones creating a balanced and inviting atmosphere. Designed as an open-space concept, it seamlessly connects to the living room, enhancing the sense of flow and openness. Light plays a crucial role in this design highlighting textures and finishes while adding depth to the space. Whether natural or artificial, the lighting enhances the kitchen's ambiance making it a warm and stylish centerpiece of the home.



ARES
FB11



GREY OLIVE
6006



JET BLACK
9005



CLASSIC

Classic Kitchens Are Known for Their Timeless Elegance,

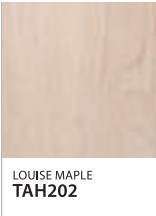
often characterized by the use of solid wood materials that bring warmth and durability to the space. Woods such as cherry, walnut, maple, and oak are commonly used each offering unique features. Cherry wood, with its rich reddish hue, adds a sense of sophistication, while walnut brings a deep, luxurious look with its dark, intricate grain. Maple offers a lighter, more subtle tone, making it a versatile choice that complements various design styles. Oak, with its prominent grain patterns, gives the kitchen a traditional and sturdy feel.

In addition to the use of these beautiful woods, our kitchens feature hand-made cabinets crafted with precision and attention to detail ensuring each piece is unique. These cabinets are then beautifully painted offering a sleek, polished finish that enhances the natural beauty of the wood while providing a durable and easy-to-maintain surface. Together, these elements create kitchens that are both functional and visually stunning offering a blend of classic charm and lasting quality.



A classic maple kitchen with hand-painted cabinets exudes warmth and timeless elegance, blending natural beauty with artisanal craftsmanship. The rich, golden tones of the maple wood are complemented by the delicate, hand-painted detailing on the cabinets, creating a unique, personalized touch that adds character and charm to the space. Each stroke of paint enhances the cabinet design, highlighting the intricate patterns and soft hues that bring a sense of old-world craftsmanship into a modern setting. This kitchen becomes more than just a cooking space; it is a refined, inviting area that radiates classic appeal while maintaining functionality and durability.

The hand carvings, etched from solid maple wood, add depth and texture, transforming each piece into a unique work of art. This intricate craftsmanship enhances the overall design giving the kitchen a refined, luxurious feel.





Arabesque Inspirations: Elevating Kitchen Design with Middle Eastern Flair

Arab influences in the classic kitchen are seamlessly integrated into the design reflecting the grandeur and custom craftsmanship that characterize Middle Eastern cuisine. The intricate patterns, rich textures, and elegant detailing elevate the overall aesthetic creating a kitchen that feels both timeless and regal. The warmth of the wood, the sophisticated cabinetry, and the use of traditional design elements evoke the opulence and culture of Arab heritage transforming the kitchen into a space that is as luxurious as it is functional.

Middle Eastern cuisine has been thoughtfully adopted into our catalog infusing the design with bold flavors and a sense of authenticity that enhances its classiness. This fusion of culture and design brings a unique character to the space where every detail—from the layout to the finishes—reflects the deep-rooted traditions of the region. The result is a kitchen that not only celebrates the beauty of Arab influences but also creates an inviting, functional environment where culinary creativity can thrive.

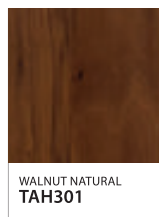






The Richness of Walnut: Classic Kitchen Design

A classic walnut kitchen with glass cabinets brings an air of sophistication and timeless elegance to any home. The rich, dark tones of the walnut wood create a warm, inviting atmosphere while the glass cabinets showcase fine dishware or decorative pieces adding a touch of transparency and lightness. Above, a stunning glass chandelier hangs gracefully in the center of the house casting a soft glow that enhances the kitchen's refined ambiance. The combination of luxurious materials and thoughtful design makes this kitchen not only a functional space but also a central, elegant feature of the home that exudes class and style.



The different hues of the cabinetry paint are fully customizable through a range of stain options allowing for a personalized look that suits any style. This flexibility ensures that each kitchen design can reflect the unique preferences and vision of its owner.





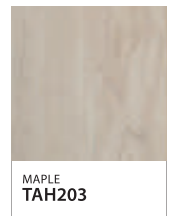






This classic kitchen features a timeless white theme exuding elegance with its clean lines and sophisticated charm. The intricate carvings on the crown molding add a touch of traditional craftsmanship elevating the overall design. The bright, airy aesthetic is beautifully complemented by Calacatta quartz countertops which not only offer exceptional durability but also provide a luxurious color contrast with their striking veining. The rich tones of the Calacatta quartz perfectly balance the pristine white cabinetry creating a sophisticated and inviting atmosphere. This seamless fusion of classic design elements with modern materials results in a kitchen that is both functional and visually stunning making it the perfect space for both cooking and entertaining. The thoughtful details in this design bring together the best of both worlds ensuring timeless appeal while meeting the demands of contemporary living.

Calacatta Quartz Meets Solid Wood in a Classic Kitchen







CONTEMPORARY & AVANT-GARDE

Elements from Both Classic and Modern Styles

create a harmonious and adaptable design. These themes often feature a combination of materials like solid wood, stainless steel, glass, and stone blending the timeless warmth of wood with the sleek, clean lines of modern finishes. A standout feature of contemporary kitchens is the use of painted cabinetry available in a wide range of colors and shades. From soft, neutral tones to bold, striking hues, the painted finishes offer endless possibilities for personalization. Whether paired with natural wood accents or modern appliances, this fusion of materials and colors creates a functional, stylish space that merges tradition with innovation.

At UK, we specialize in manufacturing high-quality, custom-made kitchens that reflect both classic craftsmanship and modern design trends. With a focus on precision and attention to detail, our factory ensures that every kitchen is crafted to meet the unique needs of each customer offering a perfect blend of style, durability, and functionality.









Global Flavors, Elegant Spaces: A Kitchen Design for Every Meal

This kitchen setup brings a vibrant energy to the space with peppers and a bowl of noodles topped with fiery hot seeds laying beautifully on the table symbolizing the bold flavors of international cuisine. The array of colors and textures from the peppers, alongside the noodles, create a dynamic and inviting atmosphere that sparks the imagination. It's the perfect representation of a catering experience where food is not only about taste but also about the sensory experience setting the stage for a memorable dining experience.

The interior design of this kitchen elevates the theme with sleek countertops and thoughtfully placed elements that complement the rich ingredients and create an immersive space. The modern yet warm design invites guests to connect over food celebrating global flavors and the joy of shared meals. From the strategic placement of utensils to the open space for preparation, this kitchen embodies a design that encourages creativity and togetherness making it a truly exceptional environment for crafting and enjoying an international culinary experience.





WHITE
SOLID FRAME

Bespoke Veneer Kitchen

This contemporary kitchen features a sophisticated cabinet design that blends durability with aesthetic appeal. The solid frame construction ensures robustness and longevity while the high-density fiberboard (HDF) center provides a stable and smooth surface. The walnut veneer adds a distinctive touch allowing the natural grain to be visually prominent. This unique effect enhances the kitchen's overall elegance making it an excellent choice for those who appreciate both modern and natural elements in their interior spaces.

One of the standout qualities of these cabinets is their customizable nature. Homeowners and designers can select from a variety of colors ensuring that the kitchen seamlessly integrates with the surrounding decor. The paint options are based on a predefined palette code providing consistency in the finish while still allowing for personalization. Whether opting for a subtle, neutral tone or a bold, statement color, this flexibility makes it easier to achieve a tailored look.



Beyond aesthetics, this cabinet design also prioritizes functionality. The solid frame provides structural integrity ensuring that the cabinets remain durable over time while the HDF center prevents warping and cracking. The walnut veneer, apart from its rich texture, also offers a smooth surface that is easy to maintain. This combination of strength, beauty, and customization makes this kitchen an ideal choice for modern homes seeking a balance of practicality and visual appeal.







This contemporary kitchen offers a truly unique, sui-generis experience, with accessories designed to maximize convenience and organization. The soft white paint sets a calm, clean backdrop while the thoughtful design of the closets allows for easy, accessible storage. With a focus on both aesthetics and functionality, this kitchen effortlessly blends style with practicality creating a seamless environment for cooking and daily use.

Contemporary kitchens have evolved with solid frames and diverse countertop materials combining durability with modern design. Solid frames offer strength and flexibility while materials like quartz, marble, granite, and composites enhance the kitchen's style. This balance of functionality and aesthetics, along with smart storage solutions, makes modern kitchens adaptable and personalized to suit any homeowner's needs.





A Royal Touch: Blue & Gold Elegance

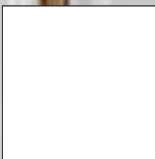
This stunning kitchen showcases a deep blue hue accented with luxurious gold handles that add a touch of sophistication. Crafted from high-quality painted HDF, this kitchen is fully customizable allowing for any color selection to match personal style and home aesthetics. The variety of available finishes and textures ensures a one-of-a-kind design bringing depth and character to the space. Whether opting for a sleek, modern look or a more classic feel, this kitchen is designed to be as unique as its owner.



This blue kitchen with gold handles combines elegance and modern charm crafted from durable painted HDF for a smooth, customizable finish. Offering a wide range of textures and colors, it can be tailored to fit any design preference from contemporary to classic. The gold accents beautifully contrast the rich blue making this kitchen a functional yet luxurious centerpiece.



SIGNAL BLUE
5005



PURE WHITE
9010



From Concept to Creation: Interior Design and Kitchen Solutions

At the heart of our work lies the art of interior and kitchen design where functionality meets beauty to create spaces that reflect both personal taste and cultural significance. We believe that a kitchen is not just a space for cooking, but an environment where memories are made and traditions are honored. In our design approach, we integrate both modern aesthetics and traditional elements ensuring the space serves as the perfect backdrop for culinary experiences. Just as a dish is crafted with care, balancing flavors and textures, we design kitchens with attention to every detail from materials to layout to enhance the experience of cooking and sharing meals. In this way, the design becomes a natural extension of the cuisine it supports creating a seamless flow between the art of cooking and the space where it happens.

The dish of raw meat, garlic, and peppers, seasoned with a special blend of spices, is a culinary delight that stands as a classic starter in Lebanese cuisine. Known for its rich flavors and bold combination of ingredients, this delicacy is considered the Lebanese equivalent of sushi in Japanese cuisine. It's a dish that brings together tradition, freshness, and craftsmanship served as an appetizer that sets the tone for the entire meal. In Lebanese culture, it's more than just food—it's a symbol of hospitality and a must-have when visiting a classic Lebanese restaurant where the flavors of garlic, spices, and raw meat come together in perfect harmony.







WHITE
SOLID FRAME

ROBLE VIRGINIA
25V

CAMBRIAN OAK
CLH 116



This kitchen offers a perfect fusion of rustic charm and modern sophistication featuring a beautiful wood countertop that brings a natural warmth to the space. The contemporary theme is carefully balanced with the addition of integrated hidden lighting which not only enhances the overall ambiance but also highlights the exquisite details of the design. The subtle lighting adds depth and creates a cozy, inviting atmosphere, ideal for a cabin kitchen setting. Paired with the countertop is a pristine white sink that complements the color of the cabinetry creating a harmonious look that ties the entire design together.

The kitchen's veneer cabinetry is tastefully finished with a striking tile cladding that adds texture and visual interest. The cladding provides a modern touch while maintaining the rustic, cabin-inspired aesthetic. This thoughtful design approach is a direct reflection of the client's unique tastes blending functional elements with personalized style. The choice of materials and finishes is not just about visual appeal but also practicality ensuring the kitchen is both durable and easy to maintain in a high-traffic, family-oriented space.





Designed specifically for a rustic home, this kitchen creates a welcoming environment where the charm of a cabin meets the sleekness of contemporary design. Every element of the kitchen—from the wood countertop to the hidden lighting and matching sink—was chosen to reflect a sense of natural beauty while providing all the comforts of modern living. The combination of these design choices creates a unique space that perfectly embodies the client's vision of a cozy, yet stylish cabin kitchen.







CLOSETS

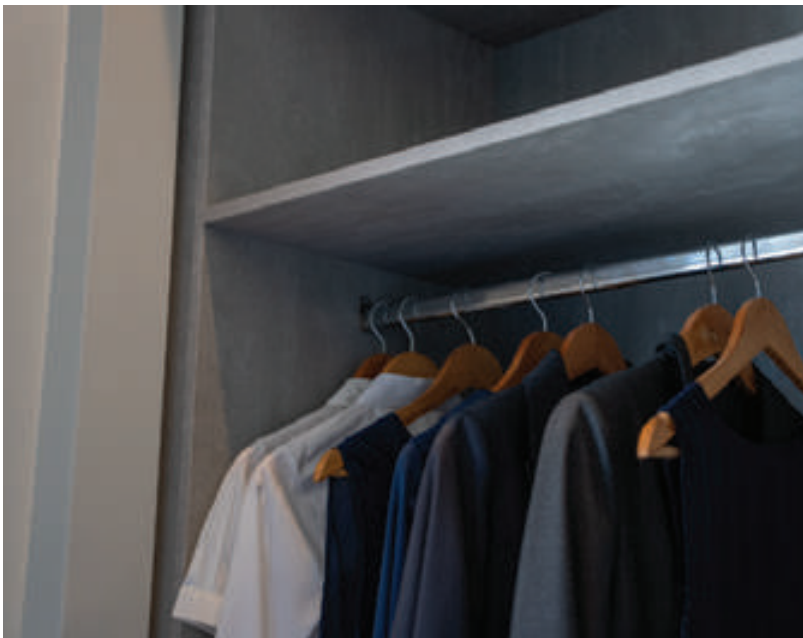


LOUIS VUITTON

The Ultimate Closet Catalog: Transform Your Space with Style and Function

Transform your space with both style and functionality. Whether you're looking to maximize storage, create a sleek and modern aesthetic, or add a touch of luxury to your wardrobe, innovative solutions are tailored to your needs. From customizable shelving and smart organizers to elegant finishes and space-saving designs, every detail is crafted to enhance both beauty and practicality. No matter the size of your space, the right closet can bring order, sophistication, and efficiency to your daily routine, making your wardrobe a seamless extension of your lifestyle.

Minimalist Design: Desk and Hidden Lighting for a Stylish Space



A simplistic desk provides a functional workspace that blends seamlessly with the design, offering style and practicality. Open shelves with concealed lighting illuminate your closet, adding sophistication while keeping the space organized and sleek.







ROBLE STELLA
74V

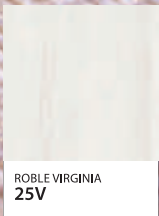


BEACH ORANGE
2004



Clutter-Free Comfort: A Sliding Closet for Organized Living

This thoughtfully designed sliding closet provides ample storage for clothes, accessories, and daily essentials. The smooth, space-saving doors ensure easy access while maintaining a clean and clutter-free environment. With its sleek and modern design, the closet seamlessly integrates into any space, adding both functionality and style. Well-organized storage solutions ensure that everything has its place, making it easier to maintain order and efficiency. Complementing the closet, a dedicated kids' study office with a well-placed desk and smart storage encourages focus, creativity, and productivity. This setup not only enhances the overall aesthetic but also supports evolving storage needs, offering a practical and stylish solution for a well-organized lifestyle.



ROBLE VIRGINIA
25V

Chameleon Mirrors: Light-Responsive Design

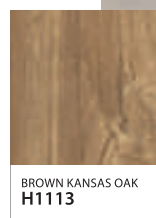
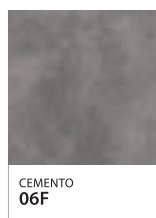
The mirror sliding doors of this closet feature a reflective finish that creates a dynamic visual effect based on lighting. When the closet light is on, the finish gives off a warm, soft glow that subtly obscures the contents providing a sleek, elegant appearance. However, when the lights are off, the doors transform into a full-length mirror offering a clear and crisp reflection for you to view yourself. This innovative design blends practicality with aesthetic appeal creating a functional yet stylish element in your space.



The kids' closet features a wood grain color scheme that adds warmth and natural texture, while a mirror is seamlessly incorporated for added functionality and style. The matte black profile accents provide a modern touch, balancing the earthy tones with a sleek, contemporary finish. This combination creates a stylish and practical storage solution that's both organized and visually appealing.

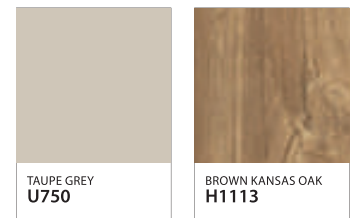
A well-organized kids' closet not only maximizes space but also makes it easier for children to access their belongings independently. By incorporating features like adjustable shelving and dedicated sections for shoes, accessories, and toys, the closet can evolve with the child's needs. With thoughtful planning, storage solutions become an essential part of a space that promotes tidiness and order while also encouraging responsibility and self-management as children grow. These closets are designed to blend seamlessly into the overall decor while providing practical solutions to everyday storage challenges.

Tiny Treasures, Big Storage: Closets for Your Little One's Needs





Tailored Hotel Concepts: From Four Stars to Five



Hotel furnishing solutions are designed to create a harmonious environment where every element flows seamlessly. By integrating a cohesive theme with matching colors, the space feels balanced and unified, enhancing the guest experience. Whether it's storage units, wardrobes, desks, or decorative elements, each component is thoughtfully chosen to complement the others, ensuring a consistent and inviting atmosphere. These solutions are perfect for creating a functional yet elegant setting that combines luxury with practicality for every guest.





This closet features sleek see-through glass doors, providing both an organized storage solution and a visually appealing design element.

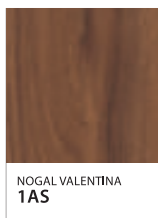


ROBLE AZABACHE
75V

STONE GREY
U727

This closet features a practical rack system with open shelves for easy access and organization complemented by a stylish jewelry box to keep your accessories neatly stored and displayed.

The open shelves offer plenty of room for clothing and essentials while the rack system ensures efficient use of space, making it a perfect blend of functionality and style.

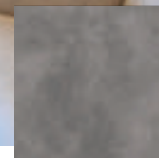


NOGAL VALENTINA
1AS

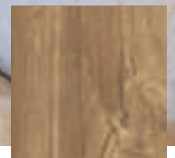


Junior's Nook: A Space to Grow, Study, and Relax





CEMENTO
06F



BROWN KANSAS OAK
H1113

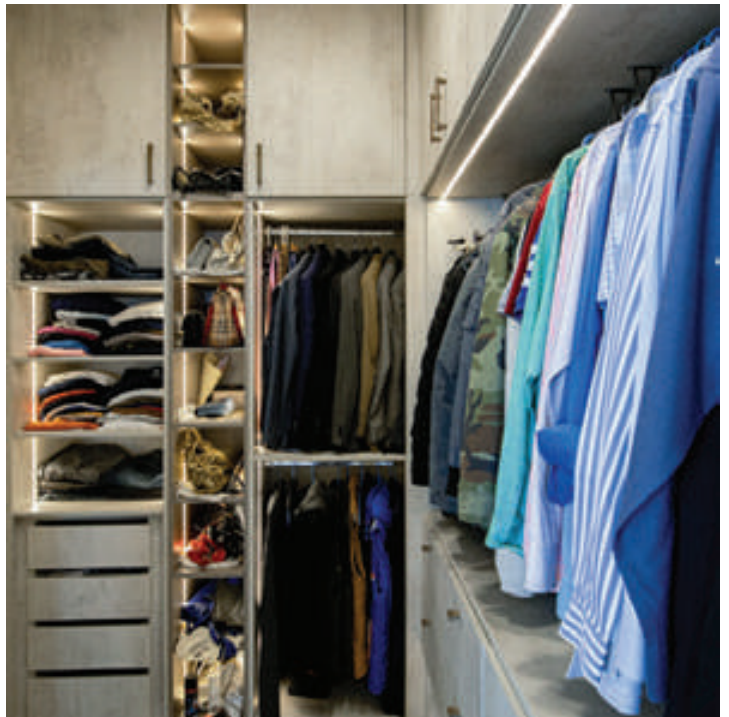


This space features practical and stylish furniture designed to cater to both organization and functionality, creating an area that adapts to the needs of a growing teenager. The carefully chosen shelving units and cabinets not only provide ample storage but also enhance the overall aesthetic, offering a clean and organized look. These storage solutions ensure that everything has its place, from books to personal items, contributing to a clutter-free environment. A well-positioned desk serves as the ideal spot for studying, working, or personal projects, providing a comfortable and functional area to focus. The layout and design encourage a balance of creativity, productivity, and relaxation, making it a perfect space for a teenager to grow, learn, and unwind.



Mister's Loft: A Space of Openness and Personalized Design

This room features striking cement finish cladding which adds a bold, industrial touch to the space accentuating its vastness and high ceilings. The fully customized closet is designed to blend seamlessly with the room's layout offering ample storage while maintaining the aesthetic flow. The expansive design captures a sense of openness and luxury showcasing the client's unique style and requirements. With every detail carefully considered, this room exudes sophistication combining modern materials with personalized elements for a truly one-of-a-kind space.







The Wooden Palette: A Selection of Rich Textures & Colors

Explore a diverse selection of wood samples, including **laminated**, **HDF**, **painted cabinets**, and **solid wood**, available in a wide range of colors, finishes, and price points to suit any style and budget. Whether you prefer sleek modern surfaces or rich natural textures, this catalog offers high-quality options designed for durability, beauty, and functionality.

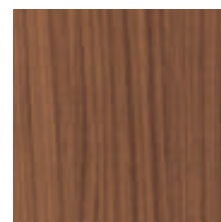
WOOD SAMPLES

Laminate Wood Collection: Stylish Finishes for Every Space

Laminate samples offer a wide range of wood grain colors, from light oak and warm walnut to deep mahogany and rich ebony, allowing you to achieve the perfect aesthetic for any space. With realistic textures and durable finishes, these laminates combine the beauty of natural wood with the practicality of easy maintenance and long-lasting performance.



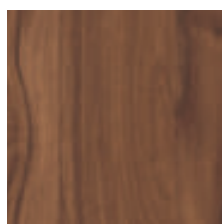
MAPLE BLANCO
222



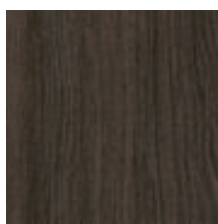
NOGAL CANALETTO
03C



FRESNO GLACIAL
16N



NOGAL VALENTINA
1AS



ROBLE SINATRA
20N



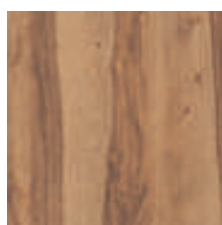
TASMANIAN NATURAL
212B



ROBLE CREBA
245B



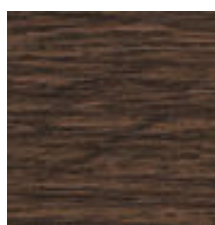
ROBLE VIRGINIA
25V



NOGAL BALI
261B



MAJESTIC ACACIA
50D



WENGUE L-01
52A



PINO ÁRIDO
56S



NOGAL CANALETTO

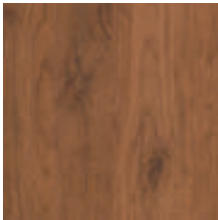
Wood Grains



PLAYA WOOD
6AR



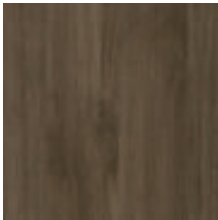
ROBLE TOSTADO
73V



OLD OAK
79Y



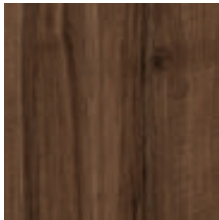
FRESNO LAGOM
7AR



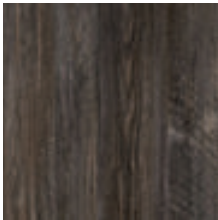
VENUS
A446



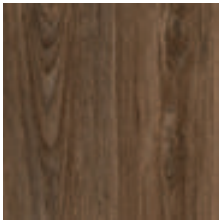
ARMADA
A492



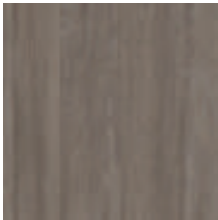
SORRENTO
A540



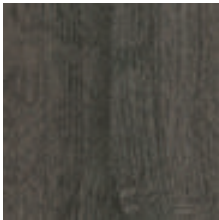
CAMBRIDGE
A545



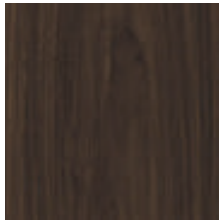
ASCONA
A608



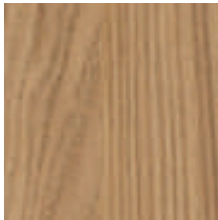
ALPINE
A612



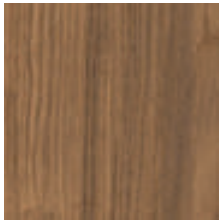
ANTHRACITE SHERMAN OAK
H1346



MARONE CASELLA OAK
H1369



NATURAL CASELLA OAK
H1385



BROWN CASELLA OAK
H1386



PARONA WALNUT
H1715



SAND BIRCH
H1732



COCO BOLO
H3012

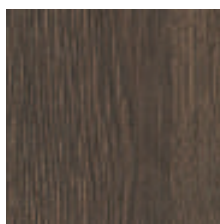


BLEACHED VICENZA OAK
H3152



LIGHT VICENZA OAK
H3165

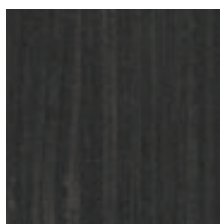
Wood Grains



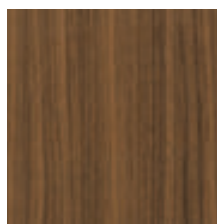
TOBACCO GLADSTONE OAK
H3325



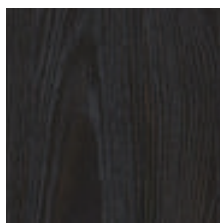
CHAMPAGNE HARD MAPLE
H3860



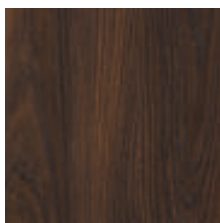
PORO NOCE
LS42



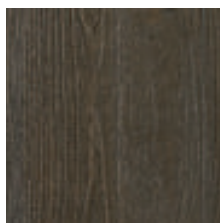
PORO NOCE
LS47



YOSEMITE
S012



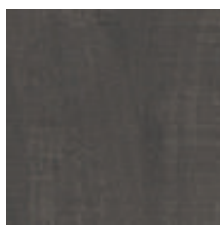
YOSEMITE
S013



SHERWOOD
S071



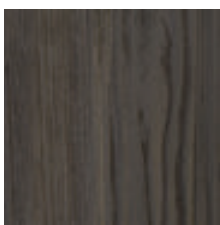
SHERWOOD
S075



SHERWOOD
S095



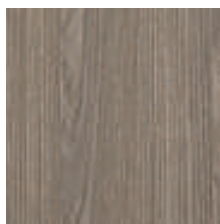
SHERWOOD
B073



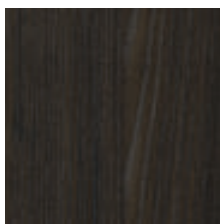
ESPERIA
S133



TIVOLI
S144



TIVOLI
S145



FRONDA
S156



OKOBO
S158

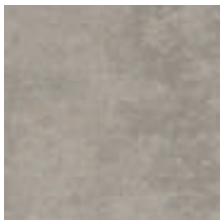
Wood Grains



OKOBO
S160

Authentic Touch: Laminate Wood Samples with Natural Textures

Our laminate wood samples feature natural textures that mimic the authentic feel of solid wood, offering a tactile experience that brings warmth and character to any surface. With carefully crafted finishes, these laminates provide the look and touch of real wood while maintaining the durability and ease of maintenance you need.



CHROMIX SILVER
F638

Avant-Garde Wood Textures: From Marble to Rust and Cement



LIGHT GREY CANDELA MARBLE
F243



ANTHRACITE CANDELA MARBLE
F244



COBRA BRONZE
F323



GREY CANVAS
F634



ANTHRACITE CANVAS
F635



WHITE CHROMIX
F637

Fantasies



GRAVITY ARENA
269B



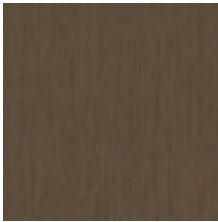
GRAVITY HUESO
271B



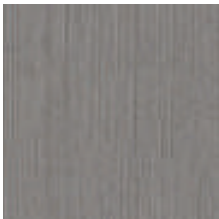
PERLA
70A



CEMENTO APOLO
99Q



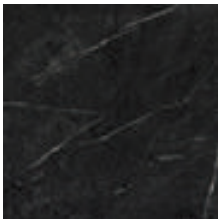
REFLEX
FA84



REFLEX
FB64



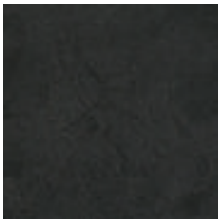
TALCO
FC13



TALCO
FC18



MATRIX
LM62



ARES
UA49



INOX
P213

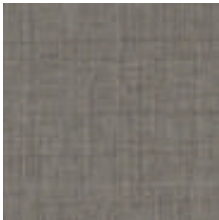


BRUSH GOLD
P268

Our unique wood samples feature striking finishes that resemble the luxurious look of **marble**, the rugged charm of **rust**, and the modern appeal of **cement**, offering an extraordinary alternative to traditional wood textures. These bold designs bring an unexpected, high-end flair to your spaces, blending the beauty of natural wood with the sophistication of unconventional materials.



BROWN LINEN
F424



ANTHRACITE LINEN
F433



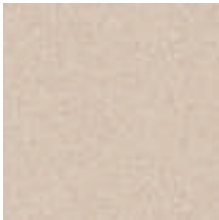
LINO CANCUN
12G



LINO HABANA
13G



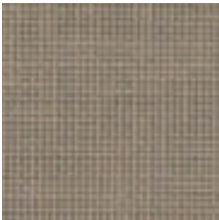
ESPIGA PIMIENTA
97Q



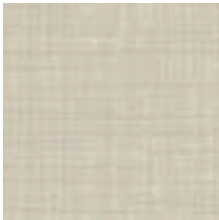
ESPIGA SAL
98Q



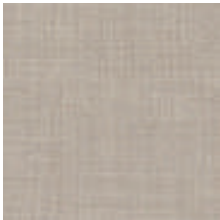
COTTON MINK
F236



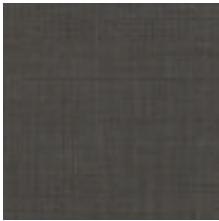
COTTON LATTE
F237



GREY TREND
F238



PENELOPE
FA44



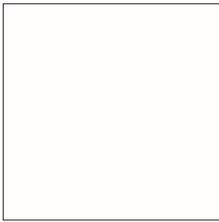
PENELOPE
FA46



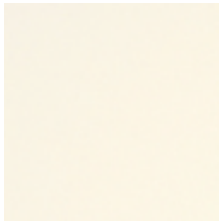
NADIR
FB10

Textiles for the inside of closets and shelves add both functionality and style, offering a soft, protective layer for your items while enhancing the overall look of your storage space. From elegant velvet liners to durable cotton or linen fabrics, these textiles provide cushioning for delicate garments, prevent dust accumulation, and create a luxurious, organized feel in your closet or shelving units.

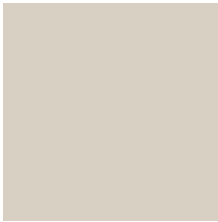
Unicolours



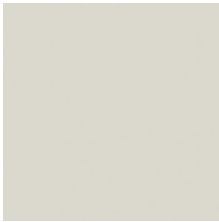
ALPINE WHITE
W1100



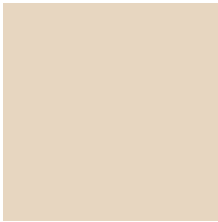
MOONSTONE
D160



DAFNE
D161



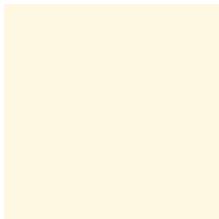
ICE GREY
D217



SAND BEIGE
U156



CURRY YELLOW
U163



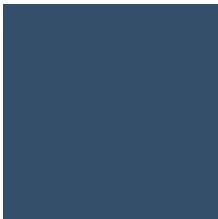
CREMA BEIGE
U222



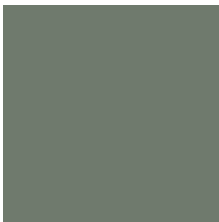
BURGUNDY RED
U311



MISTY BLUE
U502



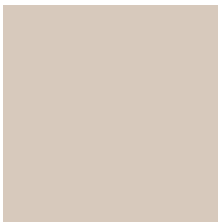
TYROLEAN BLUE
U504



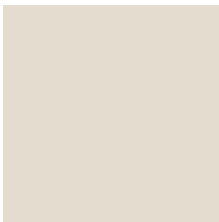
REED GREEN
U604



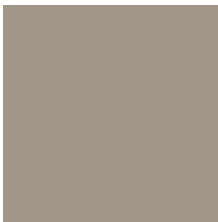
STONE GREEN
U665



CASHMERE GREY
U702



ANGORA GREY
U705



STONE GREY
U727



TAUPE GREY
U750



MONUMENT GREY
U780

Our solid color selections offer a range of rich, vibrant hues that provide a modern look while enhancing the elegance of any space. With a variety of finishes, these colors add depth and sophistication, making them perfect for creating bold, timeless designs.





Choosing the Right Cabinet Colors can Transform the Overall Mood and Style of Your Space.

whether you prefer sleek modern tones or cozy traditional hues. Neutral shades like white, gray, and beige offer a timeless and versatile appeal while bold colors such as navy or forest green bring character and depth to your design. By thoughtfully pairing cabinet colors with hardware and finishes, you can create a cohesive and personalized look that perfectly complements your interiors.





BEIGE
RAL 1001



OYSTER WHITE
RAL 1013



SALMON ORANGE
RAL 2012



FLAME RED
RAL 3000



ORIENT RED
RAL 3031



PASTEL VIOLET
RAL 4009



VIOLET BLUE
RAL 5000



BRILLANT BLUE
RAL 5007



GREY OLIVE
RAL 6006



RESEDA GREEN
RAL 6011



SQUIRREL GREY
RAL 7000



OLIVE GREY
RAL 7002



GREEN GREY
RAL 7009



BASALT GREY
RAL 7012



PLATINUM GREY
RAL 7036



CREAM
RAL 9001



SIGNAL BLACK
RAL 9004



JET BLACK
RAL 9005



WHITE ALUMINIUM
RAL 9006



TRAFFIC WHITE
RAL 9016



Striking Painted Stripe Designs: HDF Cabinets

Painted stripes are a cabinet style that features bands of color, creating a striking striped effect that adds visual interest and texture to any space. This design not only gives a contemporary, bold look but also enhances the overall beauty of the project or kitchen, making it a perfect choice for adding a dynamic, appealing touch to your interiors.



GREEN GREY
RAL 7009



BASALT GREY
RAL 7012

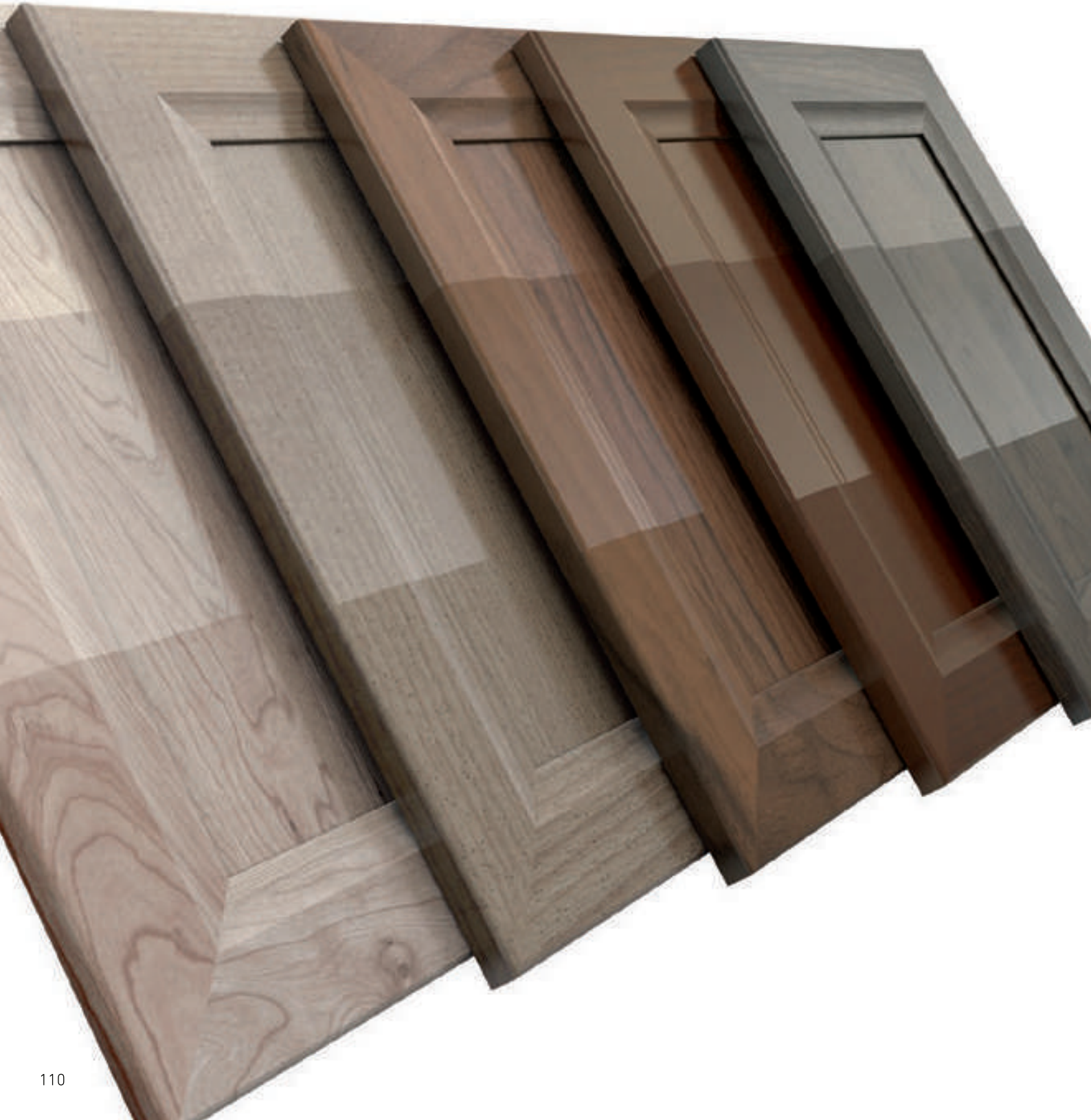


CREAM
RAL 9001



SIGNAL BLACK
RAL 9004

Door Styles: Solid Wood & HDF Options



Solid wood and HDF door styles combine strength and elegance, offering diverse designs that complement any interior. Each style is carefully matched with the appropriate material, as determined by our technical department, ensuring optimal performance and aesthetic appeal. We offer a variety of solid woods, including maple, cherry, oak, and more, to suit your unique style and preferences.



ZEUS



HERA



POSEIDON



ATHENA



APOLLO



ARTEMIS



ARES



APHRODITE



DEMETER



HERMES



HESTIA



HADES



EROS



PAN



CRONUS





SOLID FRAME

Lorem ipsum dolor sit amet, consectetur adipiscing elit, sed diam nonummy nibh euismod tincidunt ut laoreet doliriure dolor in hendrerit in vulputate ex ea commodo consequat. Duis autem vel eum iriurate qui.



BROWN



CREAM



IVORY



OLIVE



PLATINUM



PURE WHITE





ACCESSORIES
HANDLES
FITTINGS
LIGHTING

ENHANCEMENTS

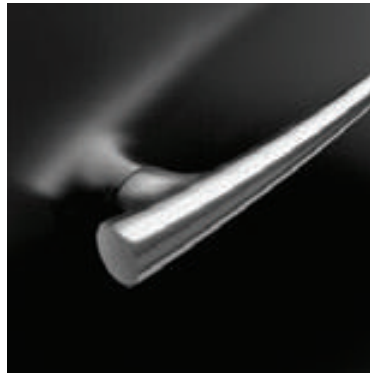
HANDLES



The beauty of our handle collection lies in its adaptability giving you the freedom to make your own unique design choices. It's all about personalizing your space so you can select the handles that best match the finishes and materials in your project. This flexibility ensures that the final design is truly yours whether you're looking for understated elegance or bold, eye-catching features to complete your kitchen or interior.



15244
COLIBRI / 31



15183
ARCO / 31



15185
MUSA / 31



15249
QUEEN / 7



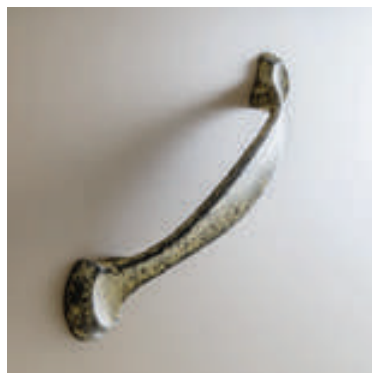
15099
ELEGANCE / 9





15075
NOVECENTO

/ 34



15082
VIAGGIO

/ 45



15162
BRIDGE

/ 91, DO



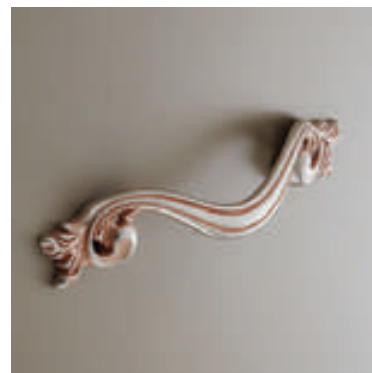
15083
SENSAZIONI

/ 31



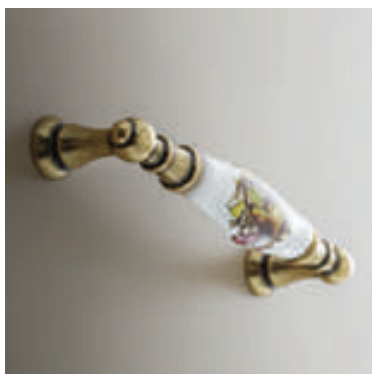
15098
FRIDA

/ 95



15169
AIDA

/ 41



15141
NEW DECO

/ 47

Whether you're designing a modern, contemporary or classic kitchen, our range of handles allows you to create a tailored solution that blends seamlessly with the materials you choose. From clean, geometric lines for a modern look to more intricate designs for a timeless classic, these handles are versatile enough to enhance any design concept. They serve not just as functional pieces but also as statement accents that add character to your space.



15247
ETRURIA

/ DH



15177
PANDORA

/ 9



15206
LAMA

/ 83



15164
MELODIA

/ 36



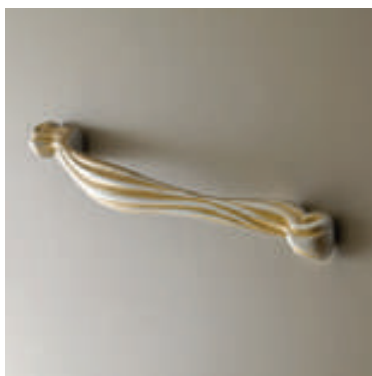
15180
LIBRA

/ 31



15229
AUTUMN

/ 25



15179
BAROCCA

/ 7, 47



15202
CRYSTAL

/ 32



15242
FLAT

/ DG



15182 / 83
ONDA



15184 / 31
VELA



15187 / 31
CALEIDO





15227
SLIM

/ HC



15241
STICK

/ 12, T5



15243
CLIP

/ 31

/ Available Finishes - Page 174

KNOBS

Our selection of knobs comes in various shapes, sizes, and finishes to suit different styles and materials. Whether you prefer sleek or intricate designs, our collection allows you to personalize every detail and create a unique, cohesive space that reflects your style.





24075
NOVECEN

/ 34



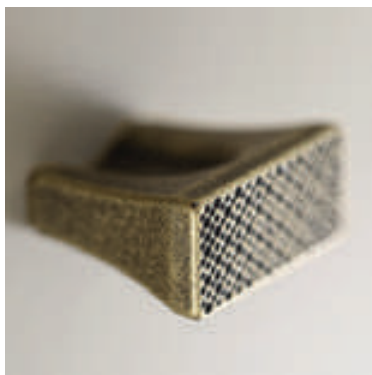
24084
PROFILI

/ 31



24099
ELEGANCE

/ 9



24162
BRIDGE

/ 91, DO



24183
ARCO

/ 31



24202
CRYSTAL

/ 32



24229
AUTUMN

/ 25



24247
ETRURIA

/ DH

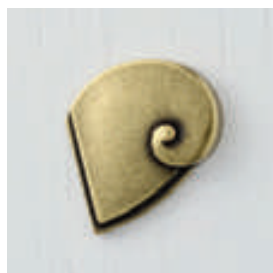


24316
GRACE

/ 47

FINISHES

Our knobs and handles are available in finishes like polished, matte, satin, and antique offering a range of options to complement your design. Whether sleek or subtle, these finishes add texture and enhance the overall look of your space.



⁷
ORO DIVALENZA



⁹
FLORENCE



¹²
SATIN BRASS



25
OLD SILVER



31
MAT NICKEL



32
BRIGHT NICKEL



34
**SATIN NICKEL INOX
ASPECT**



36
BRIGHT CHROME



41
GOLDEN WHITE



45
MAT CHROME



47
ORIENTAL SILVER



83
GRAPHITE



91
PEWTER



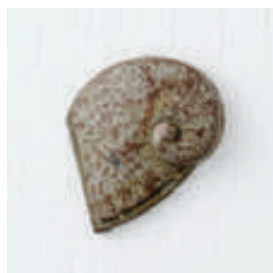
95
IRON EFFECT MAT



DG
LONDON GREY



DH
GOLDEN SHADOW



DO
WATERY RUST



HC
CHAMPAGNE



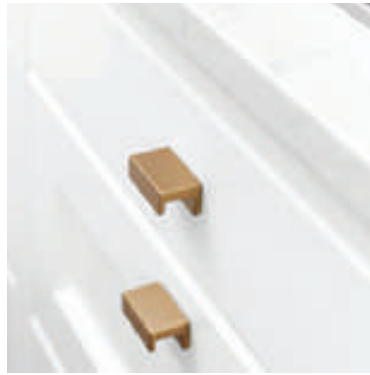
T5
NERO SILK EFFECT



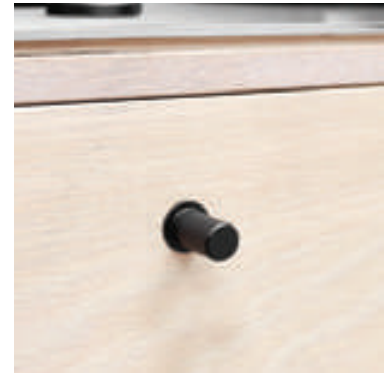
Our handles offer a stylish and functional solution, with a wide range of designs and finishes to suit any interior style.



F501FUR001 / BRUSHED BRASS
STATION HANDLE



F501FUR002 / BRUSHED BRASS
STATION KNOB



F501FUR003 / MATT BLACK
HARLEQUIN



F501FUR004 / MATT BLACK
REGULAR 2



F501FUR006 / MATT BLACK
BENCH



F501FUR007 / BRUSHED BRASS
BENCH



F501FUR010 / DARK BROWN - INOX LOOK
STRAP - LEATHER

We have huge stocks of elegantly designed furniture handles that seamlessly blend functionality with timeless aesthetics. Crafted from high-quality materials, they add a modern and stylish touch to cabinets and drawers in both residential and commercial spaces.

Proper installation of handles is crucial to ensuring the longevity and functionality of your kitchen, preventing damage and maintaining smooth, secure operation over time.





LIFT & HINGE SYSTEMS

Lift Systems

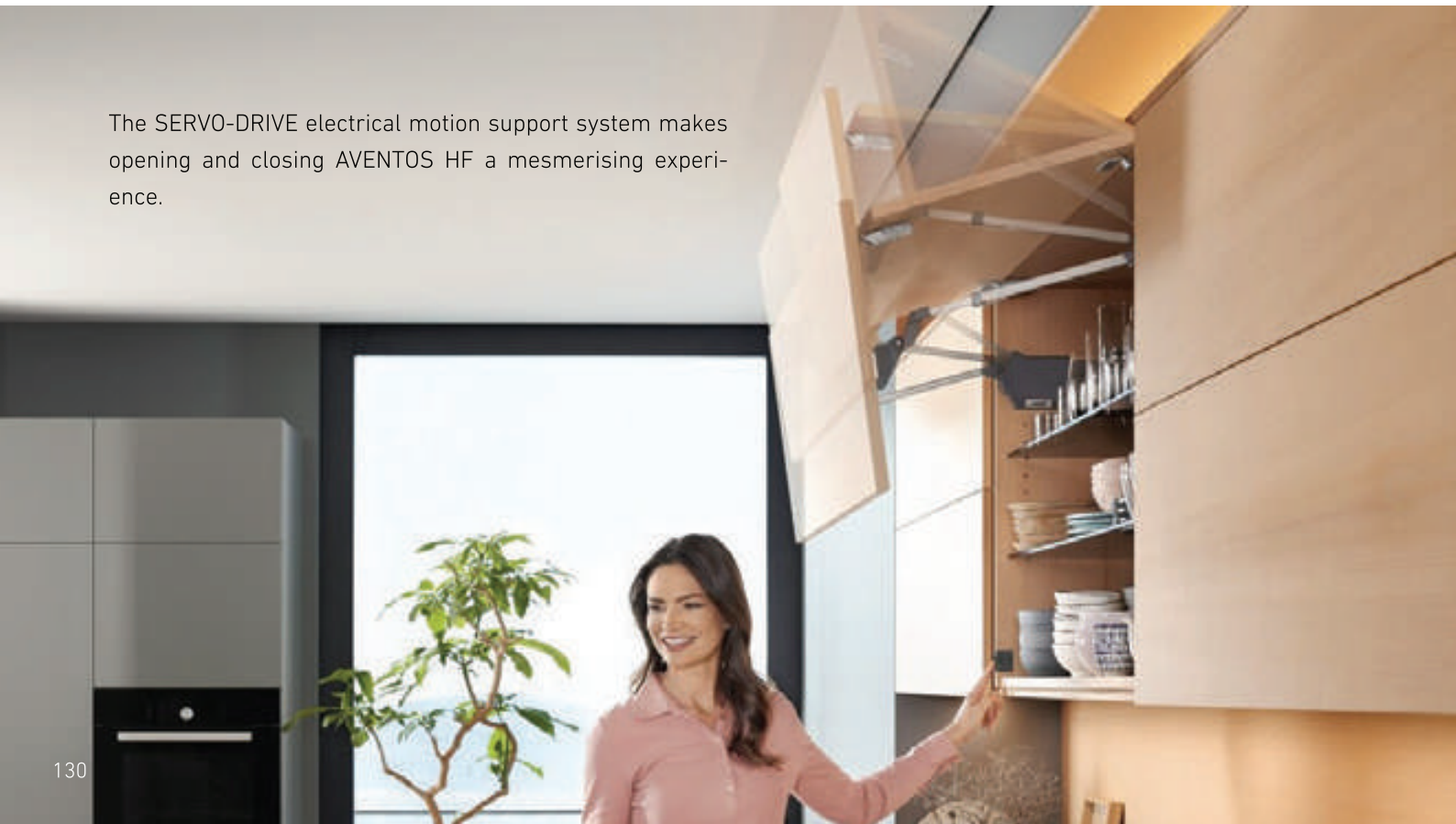
AVENTOS HF

The solution for high wall cabinets with bi-fold fronts.
Little space is needed above the cabinet.




3 lift mechanism types and 4 telescopic arms are sufficient to cover all applications. The lift mechanisms and front fixing brackets have been designed for symmetrical use.

The SERVO-DRIVE electrical motion support system makes opening and closing AVENTOS HF a mesmerising experience.





	Motion	Typical applications	Possible fronts	Possible cabinet dimensions in mm
HF		Wall cabinet, high, bi-fold fronts	Wooden, wide/narrow alu frame fronts, wood-glass combinations, asymmetrical fronts, mitred and rebated applications	Height 480–1040 Width up to 1800

- Ideal for high wall cabinets
- Handle is easy to reach, even when the lift system is open
- Takes up minimal space even with large cabinet heights, thanks to the two-part front
- Can be used with fronts of different heights



Lift Systems

AVENTOS HK top

Compact, minimalist and highly functional. Small but strong, it is suitable for both small and large wall cabinets.

Comes with an integrated opening angle stop and safety mechanism.




Four lift mechanism types for all areas of application with the lift mechanisms and front fixing brackets designed for symmetrical use.



When there is limited space over a wall cabinet or tall cabinet, AVENTOS HK top is the preferred solution. The stay lift front barely protrudes above the cabinet so that a low ceiling height is no obstacle. Even large and heavy wall cabinet fronts can be opened with ease. For handle-less fronts, SERVO-DRIVE and TIP-ON motion technologies provide electrical and mechanical support respectively.



- Ideal for small and medium wall cabinets
- The space requirement above cabinet is low thanks to the lift system motion
- No hinges required

	Motion	Typical applications	Possible fronts	Possible cabinet dimensions in mm
HK top		Wall cabinet, tall cabinet, above fridge, larder unit, oven	Thin fronts, wooden, wide/narrow alu frame fronts, mitred and rebated applications	Height 205–600 Width up to 1800



AVENTOS HK-XS

Thanks to its slim construction, AVENTOS HK-XS provides enormous scope for the design of tall units and wall cabinets. Even cabinets with little depth are now possible. The solution has a symmetrical lift mechanism. For small and light fronts, use a single lift mechanism on one side of the cabinet. For larger and heavier fronts, attach a lift mechanism to both sides.

- Ideal for small top wall cabinets
- Also suitable for cabinets with shallow internal depths
- Symmetrical lift mechanism, can be used on one or both sides
- Easy to open
- Holds in any position
- Provides excellent access to the cabinet interior

Just 3 types of lift mechanisms are needed to cover all applications. The lift mechanisms and front fixing brackets have been designed for symmetrical use.



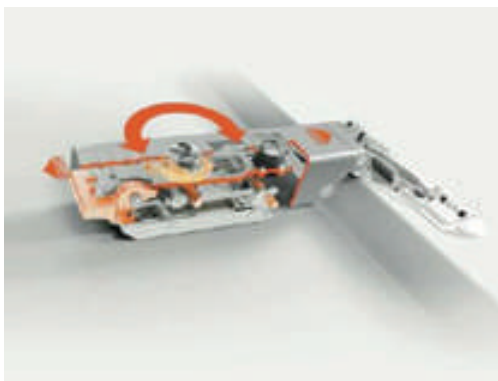
	Motion	Typical applications	Possible fronts	Possible cabinet dimensions in mm
HK-XS		Wall cabinet, tall cabinet, above fridge, larder unit, oven, extractor, bath	Wooden, wide/narrow alu frame fronts	Height 240–600 Width up to 1800

CLIP top



Concealed, multipurpose hinge

CLIP top hinges are concealed hinges for cabinet doors and guarantee trustworthy function and attractive design. Doors can be attached and removed quickly without tools - they snap on and off. Variable three-dimensional adjustment and cam adjustment are available to save time. They work in almost any hinge application because of the wide variety of mounting plates available, meaning these hinges can be used in frameless and face frame cabinets.



**EASY AND PRECISE
THREE-DIMENSIONAL
DOOR ADJUSTMENT**

PRODUCT RANGE AT A GLANCE



Standard applications

Hinges for standard applications in
107°, 110°, 120°, 170°



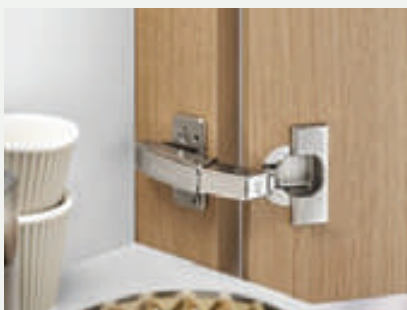
Wide angled applications

Hinges for cabinets with large opening angles
and pantry applications



Thick door applications

Hinges for thick doors and doors with a profile



Blind corner applications

Hinges for inset or overlay blind corner applications



Aluminum frame applications

Hinges for doors with aluminum frames



Small frame applications

Hinges for small doors or doors with small frames



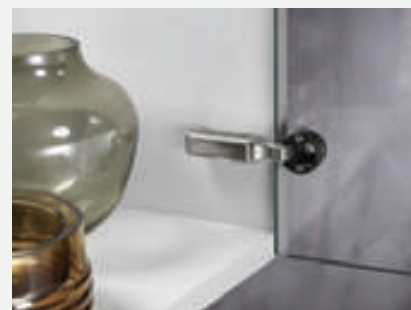
Corner cabinets with bi-fold doors

Special hinge for corner cabinets with bi-fold doors



Angled applications

Hinges for cabinets with angles of -45° to 45°



Glass door applications

Hinges for glass doors

CLIP top BLUMOTION



Concealed hinge with soft close BLUMOTION

With CLIP top BLUMOTION hinges, doors close silently because the BLUMOTION soft-close feature is built into the hinge cup. Soft-close BLUMOTION adapts to the dynamics of every door so all doors close smoothly, regardless of size, weight or the force used when closing them. The BLUMOTION feature can be deactivated on one or both hinges to ensure doors close at the right speed. Snap these doors on and off with CLIP technology and make easy three-dimensional and cam adjustments.

PRODUCT RANGE AT A GLANCE



Standard applications

Standard 110° and 110°+ hinges



Profile door applications

Hinges for thick doors



Blind corner applications

Hinges for inset or overlay blind corner applications



Aluminum frame applications

Hinges for doors with narrow aluminium frames



Angled applications

Hinges for cabinets with angles of -45° to 45°



Wide angle applications

Zero protrusion hinges to cover wide angle applications

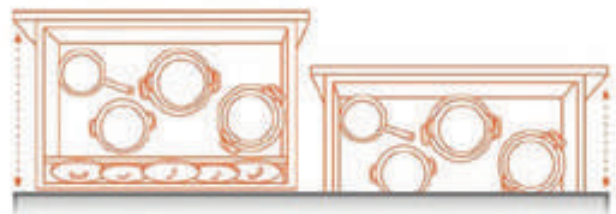


Runner Systems

TANDEM



TANDEM is a concealed runner system and the versatile solution for your wooden design ideas. The extremely wide range of options offers great design flexibility. Choose from a broad selection of nominal lengths, various types of extension, and load bearing classes as well as optional motion technologies for soft and effortless opening and closing.



Full Extension

Easy access without any loss of storage space.



TANDEM full extension

560H

- Runner for wooden drawers with a panel thickness of **11–16 mm**
- Concealed TANDEM full extension with integrated BLUMATIC self-insertion technology
- Suitable for use with TIP-ON – the mechanical opening support system

TANDEM full extension

560F

- Runner for wooden drawers with a panel thickness of **17–19 mm**
- Concealed TANDEM full extension with integrated BLUMATIC self-insertion technology
- Suitable for use with TIP-ON – the mechanical opening support system

TANDEM full extension with BLUMOTION

560H

- Runner for wooden drawers with a panel thickness of **11–16 mm**
- Concealed TANDEM full extension with integrated BLUMOTION damping effect for soft and effortless closing action
- Suitable for use with SERVO-DRIVE – the electrical opening support system

TANDEM full extension with BLUMOTION

560F

- Runner for wooden drawers with a panel thickness of **17–19 mm**
- Concealed TANDEM full extension with integrated BLUMOTION damping effect for soft and effortless closing action
- Suitable for use with SERVO-DRIVE – the electrical opening support system



Box Systems

LEGRABOX

We use high-quality hardware for our drawers carefully selecting each component to ensure durability and smooth functionality. By accessorizing with premium elements, we create a competitive, top-tier product that not only meets but exceeds expectations. This attention to detail guarantees a superior finish and reliable performance making our drawers both practical and stylish for any kitchen or project.



/ ORION GREY

DRAWER/HIGH FRONTED DRAWER
C HEIGHT - 177 MM



/ ORION GREY

DRAWER/HIGH FRONTED DRAWER
M HEIGHT - 90.5 MM



/ ORION GREY

INTERIOR ROLL-OUT
M HEIGHT - 90.5 MM

Organization Systems
AMBIA-LINE



ORION GREY
CUTLERY INSERT

The cutlery insert efficiently organizes your kitchen drawers with compartments for utensils. Made from high-quality materials, it ensures durability and a modern, sleek look.



Cabinet Applications
SPACE STEP

Create extra storage space behind toe kicks, provide easy access to wall cabinets, and let children lend a helping hand - SPACE STEP brings multi-functionality to cabinet plinths.



Our brand specializes in premium closet accessories renowned for its innovative design and superior craftsmanship. Our product range includes pull-out systems and kitchen storage solutions seamlessly blending practicality with modern aesthetics to enhance organization and convenience.



There are several storage solutions that seamlessly integrate to perfectly fit the shape of your products offering the ultimate solution for optimal organization and style.

PULL-OUT STORAGE SOLUTIONS FOR BASE CABINETS



Our storage solutions for blind corners and hard-to-reach areas maximize space and provide easy access transforming unused spots into functional storage with smooth pull-out mechanisms.

BLIND CORNER SOLUTIONS





PANTRY
STORAGE
SOLUTIONS



**PANTRY
STORAGE
SOLUTIONS**



**INTELLIGENT
PULL-DOWN
SYSTEM**

The Pantry: The Heartbeat of Your Kitchen

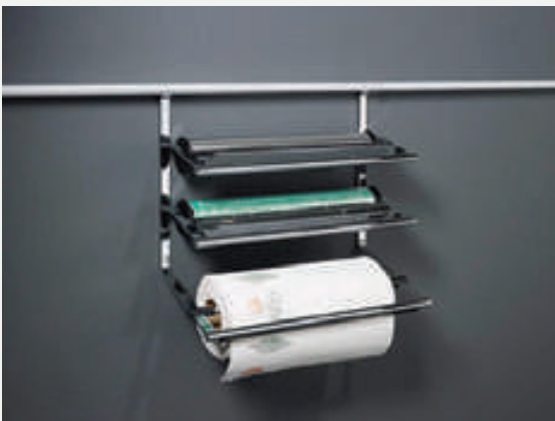
Our pantry storage solution keeps all your kitchen essentials—foods, drinks, cereals, and more—organized and easily accessible. With customizable compartments and efficient design, it ensures everything has its place, making it easy to find what you need.



CLEANING PRODUCT ORGANISER

Our kitchen accessories offer smart solutions for organizing cleaning products, tools, and more. With hooks for accessories and roll dispensers for paper towels or wrap, everything stays neatly in place and easily accessible keeping your kitchen organized and efficient.

ROLL DISPENSER



SPICE RACK



HOOK STRIP



UNDER-SINK ORGANIZERS



ELECTRONIC DOOR-OPENER WITH VOICE ACTIVATION



Your pet is an important member of your home and with accessories like feeding stations to support regular routines, you can ensure their comfort and make mealtime easier.

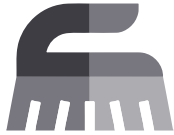


**PET
FEEDING
STATION**
ONE BOWL



**PET
FEEDING
STATION**
TWO BOWLS





We offer high-quality, innovative closet accessories designed to maximize space and enhance organization. Their product range includes pull-out shelves, wardrobe lifts, shoe racks, and storage systems, all crafted with precision and modern aesthetics. Peka solutions combine functionality and style making them a preferred choice for optimizing storage in both residential and commercial spaces.





CLEANING
CUPBOARD
SHELVING
SYSTEM



HANG
STORAGE
COMPONENT



MULTI-PURPOSE
SHELF



PULL-OUT
SHELF



HOOK
RAIL



BROOM
HOLDER



DUSTPAN
AND
BRUSH
HOLDER



KITCHEN
TOWER
BASE UNIT
PULL-OUT



BUILT-IN WASTE BINS

Built-in waste bins are designed to integrate seamlessly into kitchen cabinets providing a discreet and organized waste disposal solution. These bins are easy to use, durable, and often feature soft-close mechanisms for a clean and efficient kitchen experience.

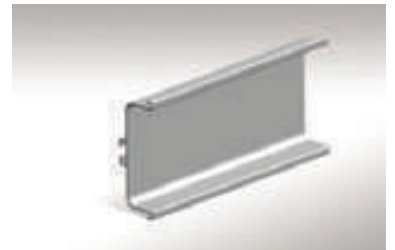




We use Italian-designed aluminum profiles used in modern furniture and kitchen applications. Renowned for their precision and durability, these profiles offer versatile solutions for creating sleek and functional cabinetry, shelving, and partition systems.



1005
"L" GOLA PROFILE



1004
"C" GOLA PROFILE



1019
**RECESSED VERTICAL
DOUBLE GRIP PROFILE**



1020
**RECESSED VERTICAL
SINGLE GRIP PROFILE**

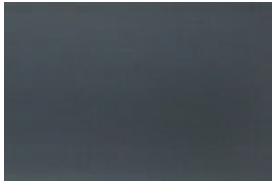


ALUMINIUM PROFILES

Aluminum profiles with anodized finishes in natural, graphite, champagne, and gold offer versatile design options for modern furniture and architectural applications. The anodizing process enhances the durability and corrosion resistance of the profiles while providing a sleek, attractive appearance. These colored finishes allow for customization adding a touch of elegance and sophistication to a variety of interior designs.



ANODE NATURAL



ANODE GRAPHITE



ANODE CHAMPAGNE



GOLD

Enhancing Interiors with Aluminum Profiles

Our aluminum profiles are a versatile choice for interior design projects, seamlessly integrating into closets, kitchen cabinets, and more. Their sleek and durable construction enhances both functionality and aesthetics making them ideal for modern and custom-designed spaces. Whether crafting a unique living area or optimizing storage solutions, these profiles provide a refined touch that complements any home's interior.







LIGHTING

Elevate Your Interiors with Superb Illumination

Plinth lighting is a discreet and stylish lighting solution installed along the base of cabinets creating a soft, ambient glow. It enhances the aesthetic of a space while providing functional illumination, perfect for kitchens, bathrooms, and living areas.

Lower panel lighting creates a unique ambiance enhancing both aesthetics and functionality. It subtly illuminates pathways and design elements, transforming your space into a refined and immersive experience.

**PLINTH
LIGHTING**

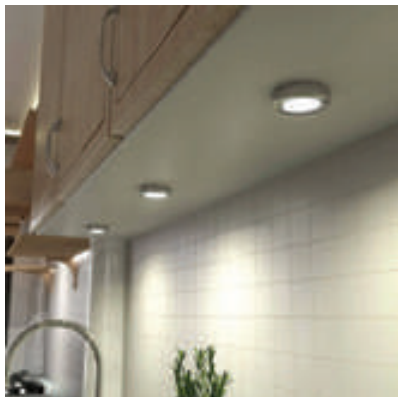
Dimmable Lighting



Color Temperature
and Brightness Adjustable ..

This lighting not only adds depth and warmth but also improves visibility in dim settings. By highlighting architectural details and creating a cozy atmosphere, it enhances the overall design while making movement through the space more effortless.

LED Spotlights



Spotlights provide focused illumination enhancing specific areas or features in a space while adding depth and a modern touch to the overall design.



LED Strip Lights

**UNDER
CABINET
LIGHTING**



Our aluminum tubes are durable and lightweight components designed for modern furniture and storage systems. Known for their versatility and sleek design, they are perfect for creating customized closet solutions, shelving, and partition systems. Additionally, we offer a comprehensive aluminum profile system that enhances the functionality and aesthetics of any space.



WARDROBE LIFT



ALUMINUM TUBE
CLOTHES HANGER ROD



TROUSERS RACK



ROTATED MIRROR

Accessories like jewelry organizers, shoe racks, rotating mirrors, and functional elements such as pull-out and fold-in features transform your closet into a highly functional and personalized space. These thoughtful additions provide an amazing experience offering both convenience and elegance while maximizing storage and accessibility.



SHOE RACK



MULTIFUNCTIONAL
STORAGE BOX



SHOE STAND



TIE RACK



We supply Italian brands that specialize in high-quality furniture hardware and modern cabinetry systems. Their range includes innovative solutions like soft-close hinges, sliding doors, and lift systems that seamlessly combine functionality with sleek design. With precision engineering and cutting-edge technology, they provide durable and versatile solutions for both residential and commercial spaces.



PULL-OUT
TROUSERS HANGER AND/OR SKIRT HANGER



PULL-OUT
WIRED SHOE RACK FOR DRAWER



HANG
HANGER RAIL FOR CLOTHES



SHELVES
SHELF WITH ALUMINIUM FRAME H 36 MM



PULL-OUT
ALUMINIUM 4-SIDED DRAWER H 128



PULL-OUT
ALUMINIUM 3-SIDED DRAWER H 128 - FOR GLASS FRONTAL



PULL-OUT
ALUMINIUM 4-SIDED DRAWER H 78



PULL-OUT
ALUMINIUM 3-SIDED DRAWER H 52 - FOR GLASS FRONTAL

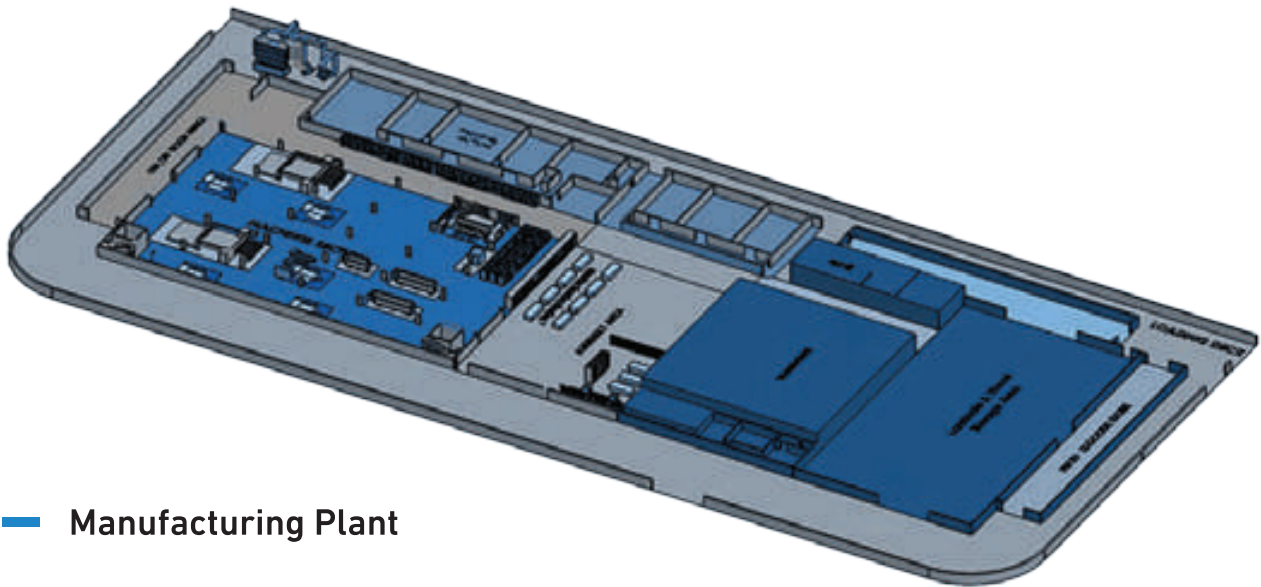
Universal Manufacturing



Universal Kitchens & Wardrobes specializes in crafting high-quality custom wood products offering unique and durable solutions for both residential and commercial projects.

UK Factory is located in Jordan with facilities that span 20,000 m². Our German machinery are integrated with high technology software producing customized products and large batch sizes.





— Manufacturing Plant

- | | |
|----------------------------------|--------------------------------------|
| 1- Storage Warehouse Area | 6- Exporting Section |
| 2- Panel Machines Section | 7- Aluminum Section |
| 3- Wood Joinery Machines Section | 8- Local Market Dispatching Section |
| 4- Painting Section | 9- Production and Management Offices |
| 5- Assembly Section | |



The Ultimate Home Experience

Today, food represents more than ever the essence of creativity, talent, and relationships. Our interior design catalog beautifully integrates images of food, blending the art of culinary experiences with the design of cabinetry, kitchens, and living spaces. The role of kitchen design is crucial as it combines functionality with aesthetics, ensuring that every detail—whether it's the choice of materials or layout—supports a seamless cooking experience. With a focus on the smallest details, we offer customizable solutions that elevate your home, allowing clients to immerse themselves in a unique experience where exceptional design, food, and kitchen functionality come together in harmony.

Oggi, il cibo rappresenta più che mai l'essenza di creatività, talento e relazioni. Il nostro catalogo di design d'interni integra magnificamente immagini di cibo, mescolando l'arte culinaria con il design di armadi, cucine e spazi abitativi. Il ruolo del design della cucina è cruciale, poiché combina funzionalità e estetica, garantendo che ogni dettaglio, sia nella scelta dei materiali che nella disposizione, supporti un'esperienza di cucina senza soluzione di continuità. Con un'attenzione particolare ai più piccoli dettagli, offriamo soluzioni personalizzabili che elevano la tua casa, permettendo ai clienti di immergersi in un'esperienza unica dove design eccezionale, cibo e funzionalità della cucina si incontrano in armonia.

اليوم، يمثل الطعام أكثر من أي وقت مضى جوهر الإبداع والموهبة والعلاقات. يتضمن كatalوج التصميم الداخلي لدينا صورًا للطعام تمثل تناغمًا بين فنون الطهي وتصميم الخزان والمطابخ والمساحات المعيشية. يعتبر تصميم المطبخ عنصرًا أساسيًا في هذا التناغم، حيث يجمع بين الوظائف والجمالية لضمان تجربة طهي سلسة ومريحة. من خلال الاهتمام بأدق التفاصيل، نقدم حلولًا قابلة للتخصيص تعزز من جودة منزلك، مما يتيح للعملاء التمتع بتجربة فريدة حيث يلتقي التصميم المبدع مع الطعام ووظائف المطبخ في انسجام تام.



UAE cuisine plays a central role in the culture, with iconic dishes like fish served with rice and aromatic spices, showcasing the country's deep hospitality and culinary pride. Machboos, ouzi, and thareed are also staples, each reflecting the rich flavors of the region and the country's traditions of sharing and communal dining. In cities like Dubai, modern Emirati culture blends cosmopolitan influences with local customs, creating a dynamic environment where innovation and tradition coexist. Despite its small size, the UAE's culture is globally recognized for its warmth, creativity, and resilience.

Abu Dhabi Location

Universal Trading Company LLC

MBH Building, Sultan Bin Zayed The First Street, Muroor Road, Abu Dhabi, Tel: +971 2 6336252

Email: dasr.auh@ugc.ae

Dubai Location

Universal Electrical Equipment LLC

Showroom 18, Ground Floor, Dubai Investment Park 2- Dubai, Tel: +971 4 2823443

Email: dasr.dxb@ugc.ae

Al Ain Location

Universal Trading Company LLC

Industrial Area (Sanaiya), Al Ain, U.A.E. Tel: +971 3 7216660

Email: dasr.alain@ugc.ae

www.utc.ae

2025 © UK Wood Ind.

